

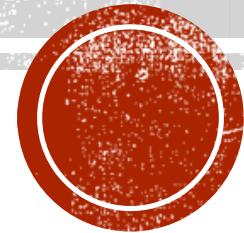
WELCOME TO THE TRM USER FORUM

APRIL 6, 2022

AGENDA:

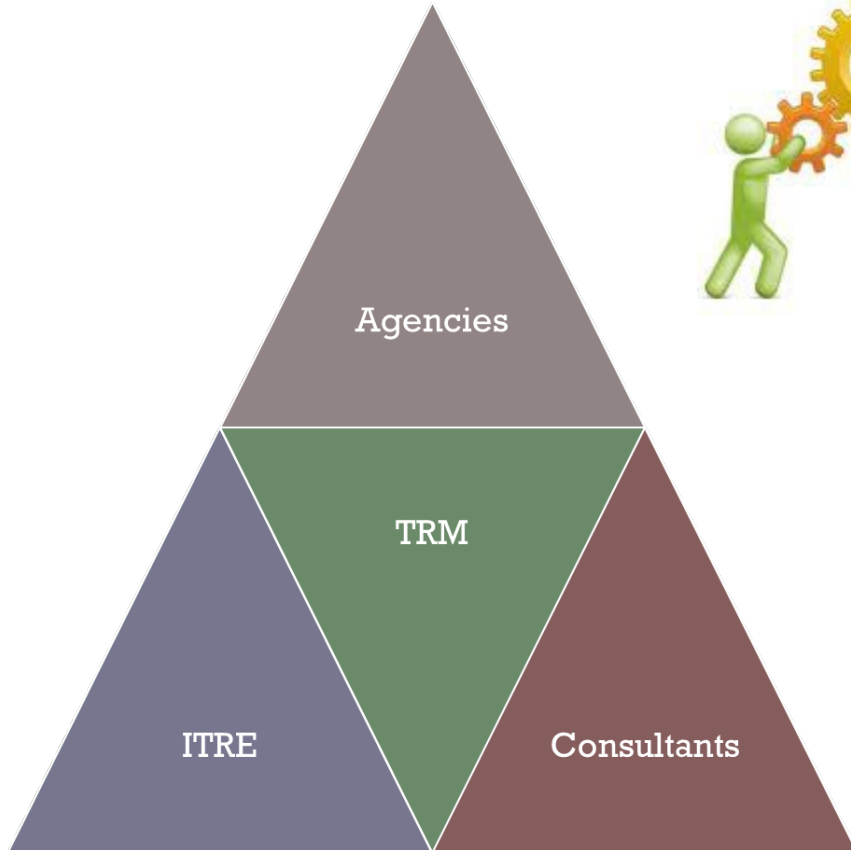
- WELCOME
- TRMG2 ROLL OUT
- PANEL DISCUSSION
- WRAP-UP
- NEXT MEETING – SPRING 2023
- MIX & MINGLE

The Meeting Will Begin Soon



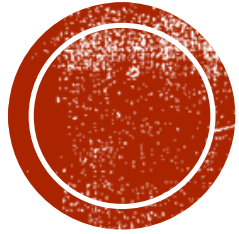
Open Dialog

Share Ideas



**Advance
the TRM**





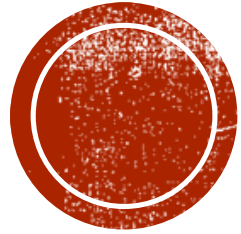
TRMG2



TRMG2 ROLLOUT SCHEDULE

Dec	Jan	Feb	Mar	Apr	May	Jun
Testing/Evaluation						
		Build 2050 MTP Inputs				
					Eval MTP	
						Adopt

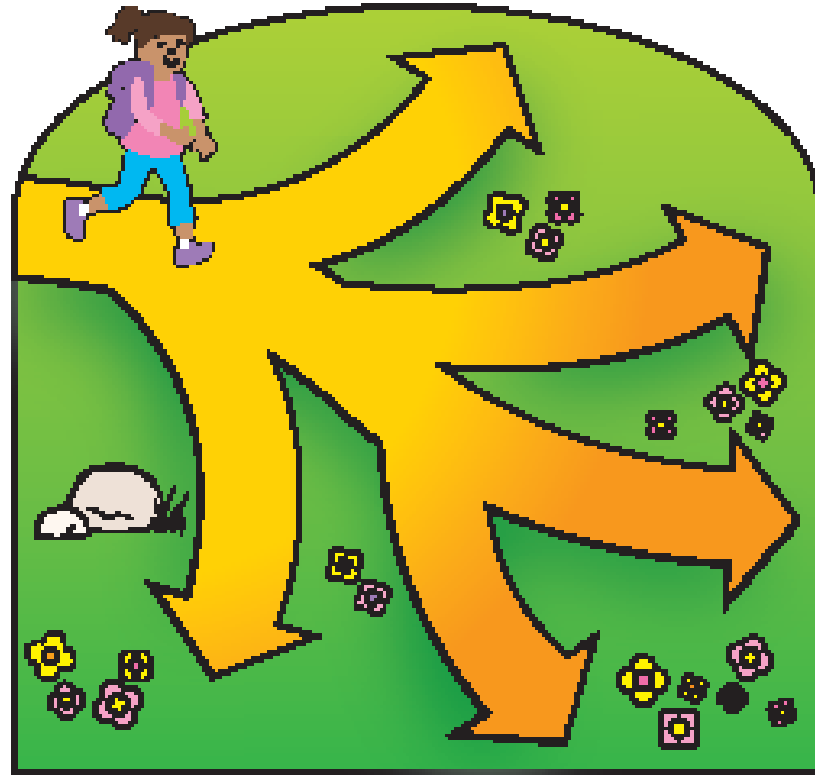
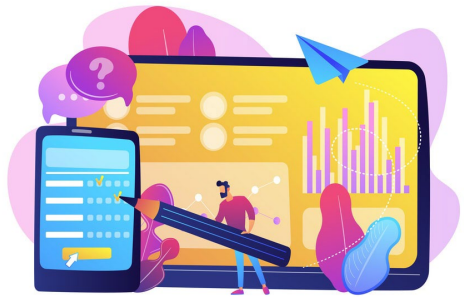




PANEL DISCUSSION

Traditional and Emerging Data

GOAL OF THE PANEL



OUR PANEL

Vince Bernardin, Ph.D.
Vice President, Caliper Corp.

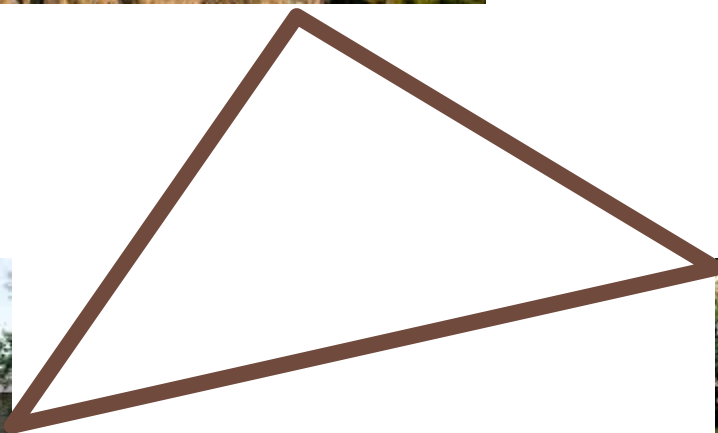


Michelle Lee
Senior Director, RSG



Greg Erhardt, Ph.D.
Associate Professor,
University of Kentucky



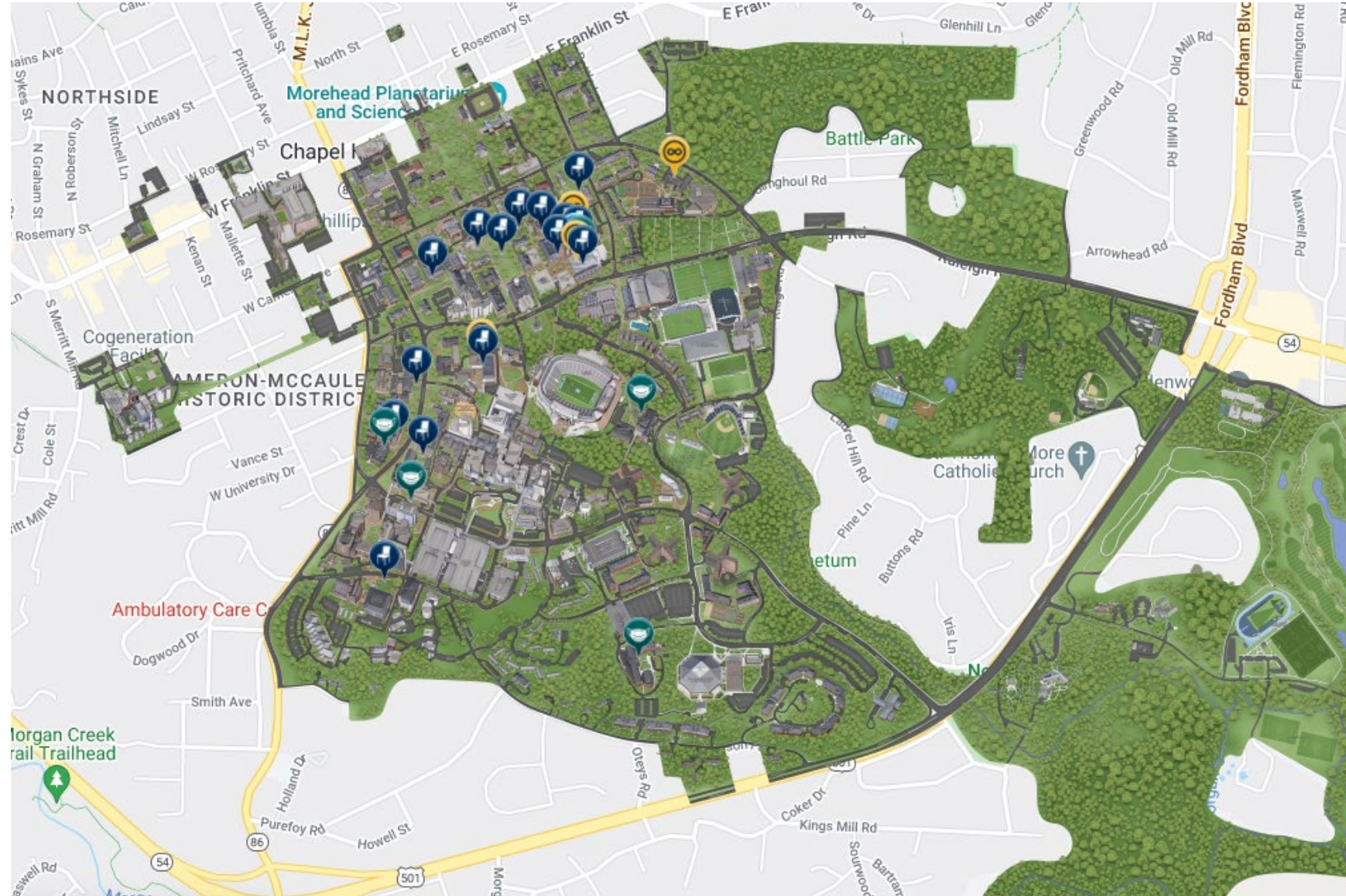


TRIANGLE UNIVERSITIES

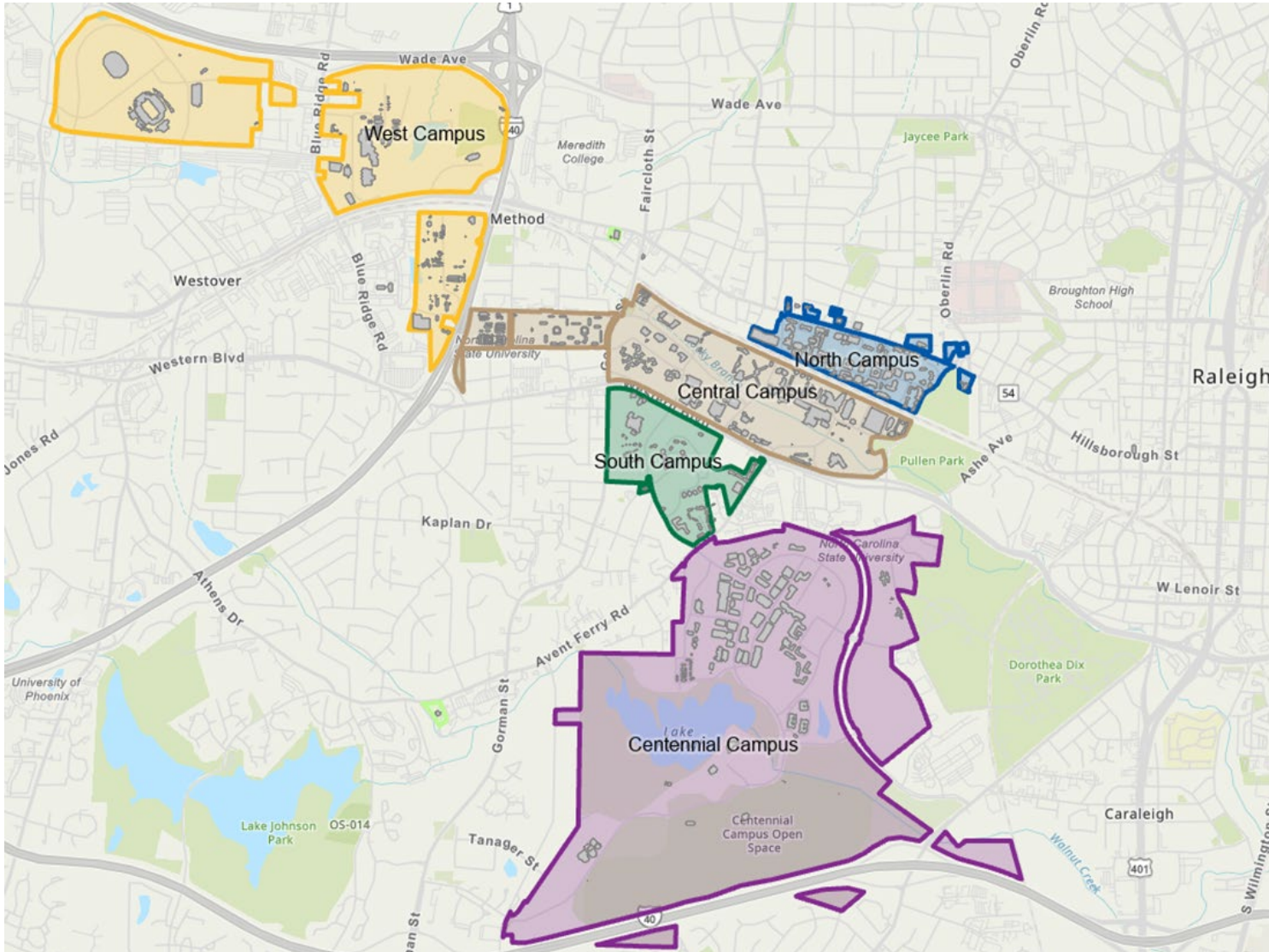


UNC CHAPEL HILL

- 31,500 students
- 13,000 faculty/staff
- Employee Mode Share
 - DA 69%
 - Walk/Bike 5%
 - Transit 21%
 - Car/Vanpool 4%
 - Other 5%
- Student Mode Share
 - DA 47%
 - Walk/Bike 14%
 - Transit 27%
- ~58% undergrads live on campus
- Regional medical center



NC STATE

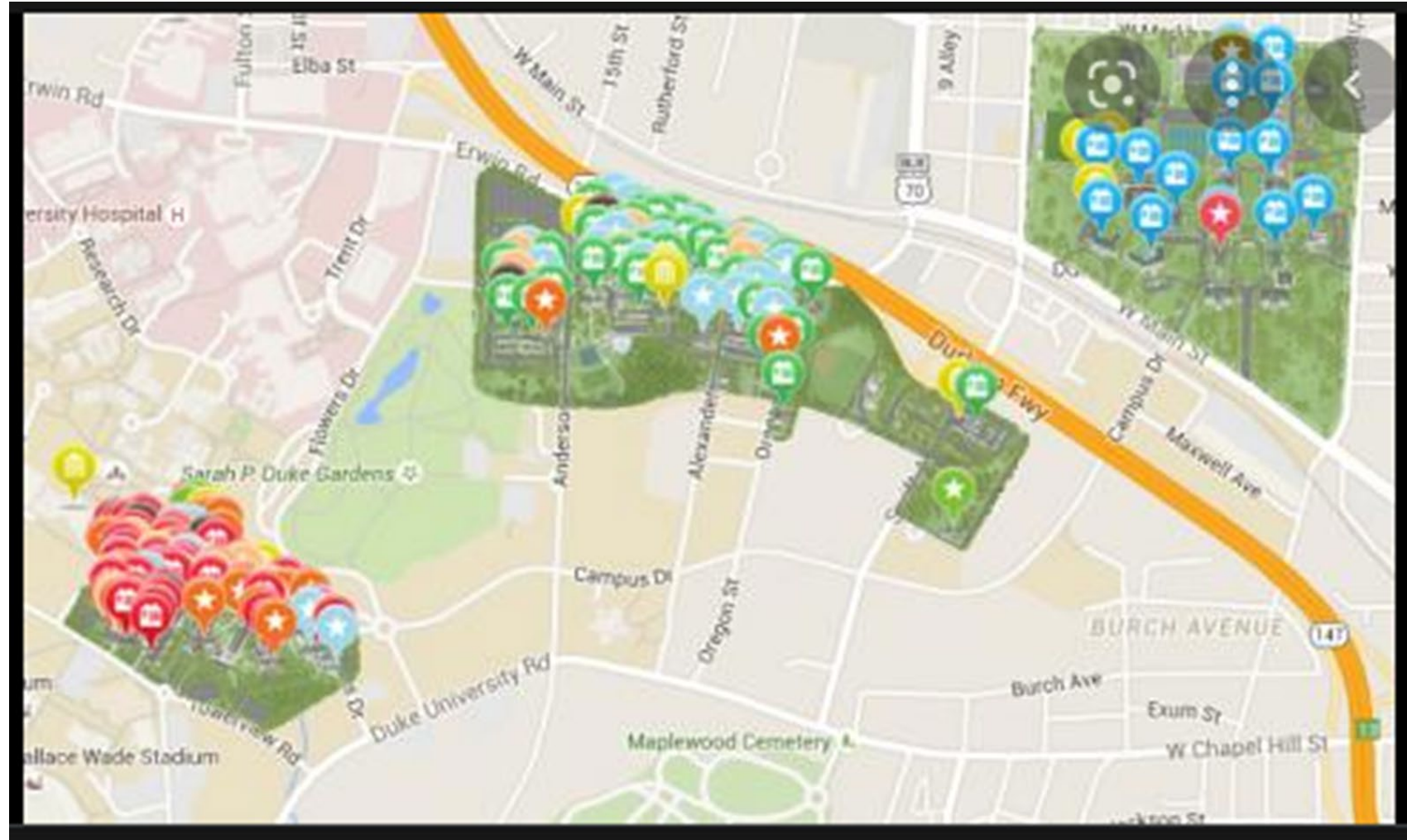


- 36,000 students
- 9,000 faculty/staff
- **Employee Mode Share**
 - DA 82%
 - Walk/Bike 4%
 - Transit 5%
 - Car/Vanpool 7%
 - Other 2%
- **Student Mode Share**
 - DA 52%
 - Walk/Bike 10%
 - Transit 20%
- ~ 46% of undergrads live on campus



DUKE

- 16,780 students
- 43,108 faculty/staff
- Employee Mode Share
 - DA 71%
 - Walk/Bike 9%
 - Transit 8%
 - Car/Vanpool 6%
 - Other 6%
- ~85% undergrads live on campus
- Regional medical center



LOGISTICS

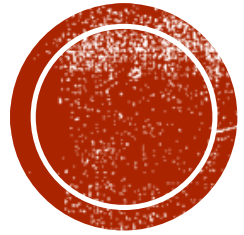
- Encourage participant interaction with the panel, as well as panelist interaction with each other.
- For participants, please raise your hand, or type your questions into the chat.
- Nita will help me monitor the chat.





© CanStockPhoto.com





CLOSING

Thanks for your time!

