

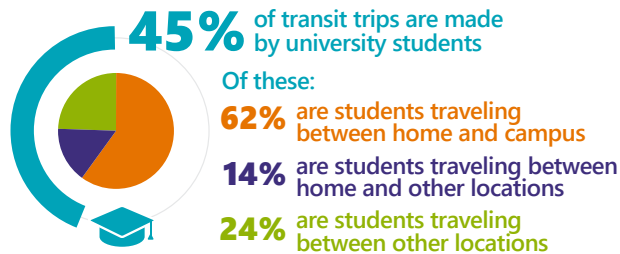
Transit Travel in the Triangle

Surveys were completed in 2006, 2014 and 2015 for Chapel Hill Transit, Duke Transit, GoCary, GoDurham, GoRaleigh, GoTriangle and NCSU Wolfline. These were weighted and expanded to 2016 and represent over **94,500** regional transit trips.[†]

Transit ridership is a small portion of the overall travel in the Triangle region, but provides an important means of transportation for key markets/travelers.

Travel Markets

UNIVERSITY STUDENTS

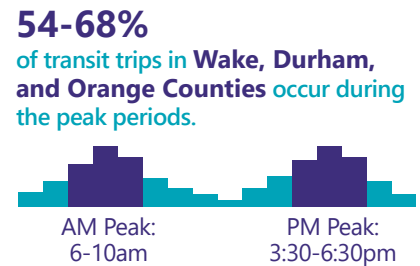
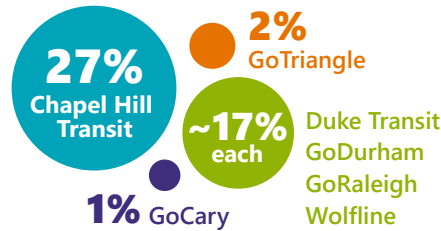


REASONS FOR TRAVEL

Of all transit trips:

- 38%** are university related
- 31%** are work related
- 8%** are shopping trips
- 23%** are other trips

TRANSIT TRIP CHARACTERISTICS



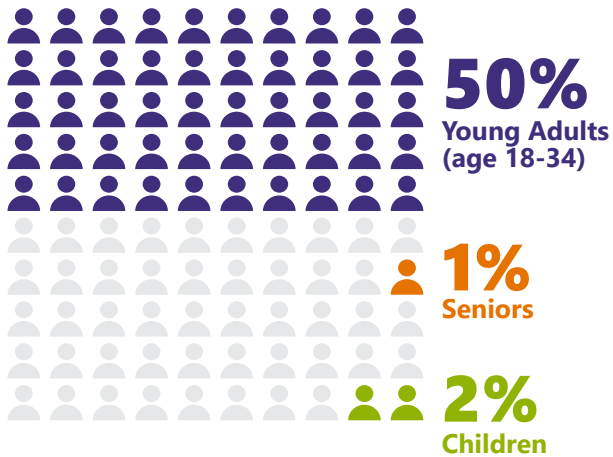
Travel Distance



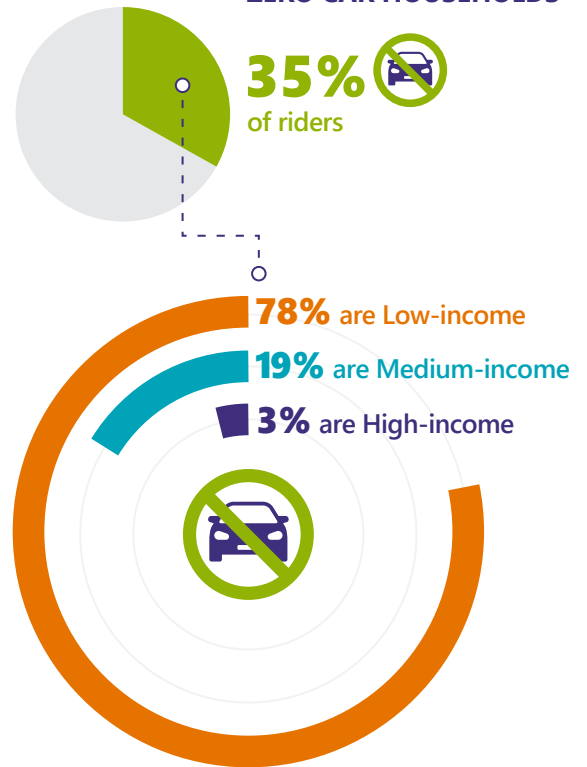
[†] Note that the data used for this Factsheet precedes the Wake Transit Plan which started in 2017.

Rider Demographics*

TRANSIT RIDERSHIP



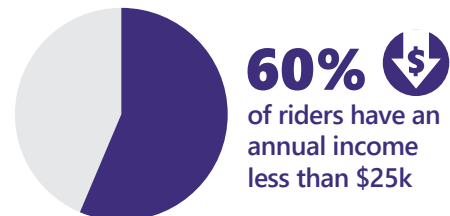
ZERO CAR HOUSEHOLDS



9% of all transit trips are from **high-income** households



27% of all transit trips are from non-university, **low-income** households



Access Mode

83% of all transit trips have a walk or bike access market

14% of all transit trips use park-n-ride to access transit

3% of all transit trips use kiss-n-ride to access transit



NC STATE UNIVERSITY

*Not all participants reported demographics. Percentages are based on reported records.