



INTEGRATING ECONOMIC IMPACTS & BENEFITS INTO THE COMMUNITY IMPACT ASSESSMENT PROCESS

Steven A. Bert, AICP



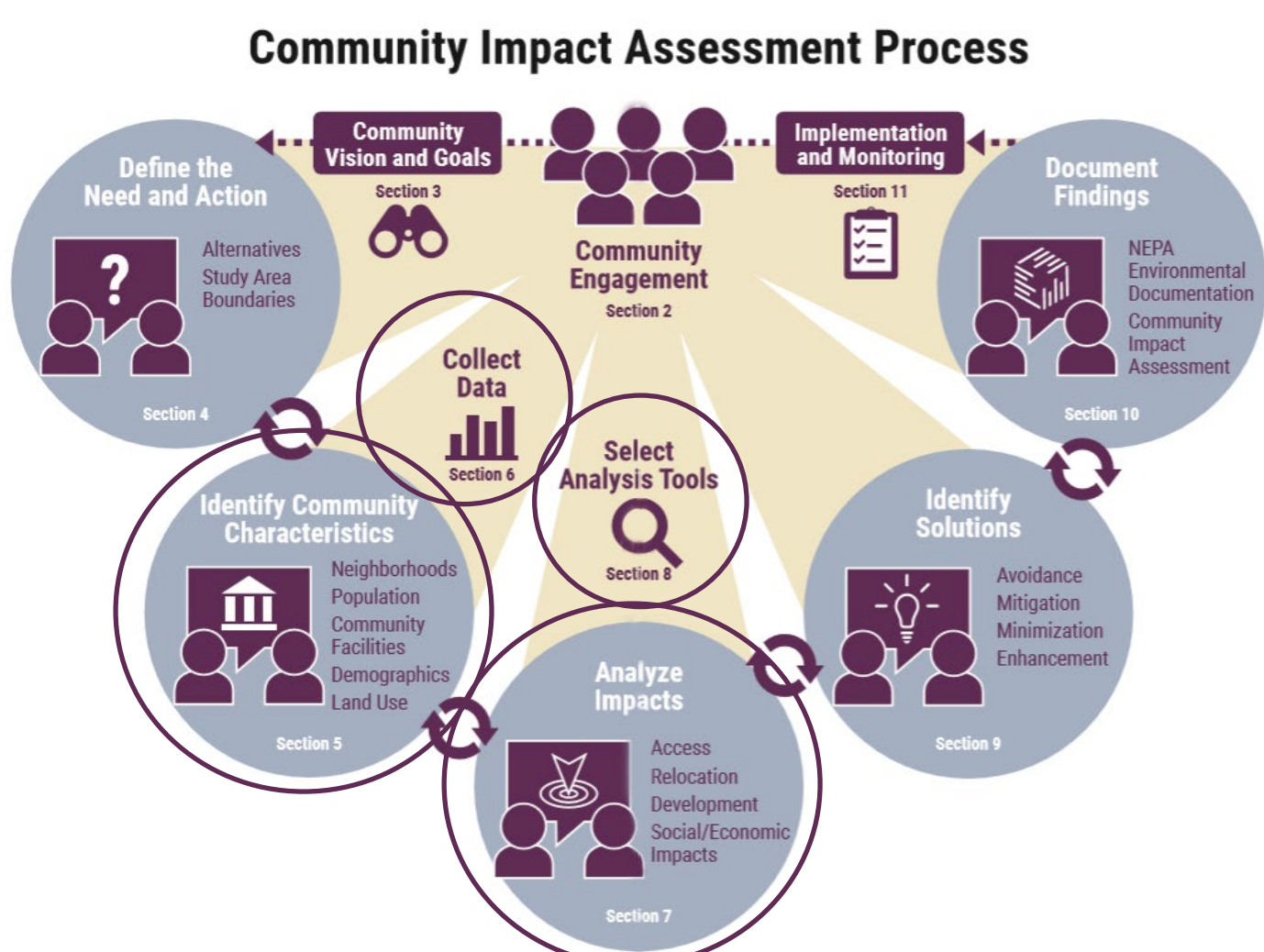
OVERVIEW

Community impact assessment is an iterative process to evaluate the effects of a transportation action on a community and its quality of life. The purpose of this poster session is to demonstrate how practitioners can conduct economic valuations as part of the CIA process.

OBJECTIVES

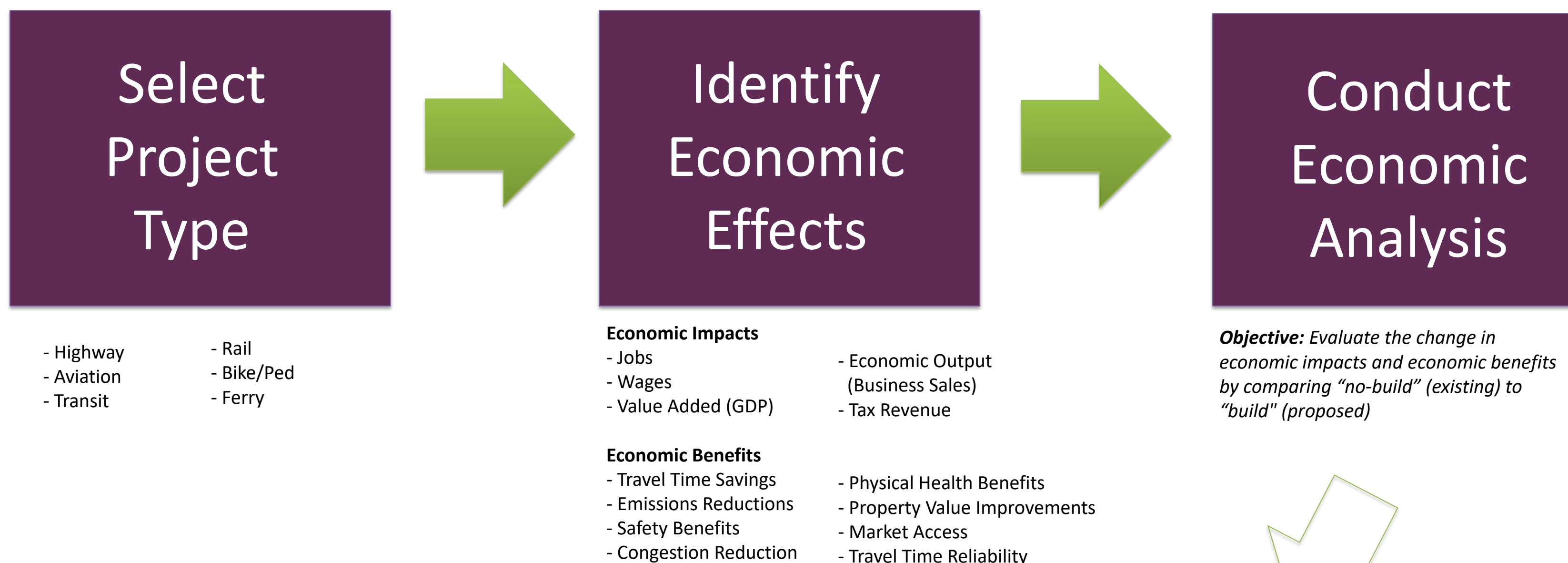
- Enable practitioners to quantify economic impacts and benefits associated with a proposed transportation project
- Include quantification in CIA process
- Establish a standardized approach that can be incorporated into the CIA process to enable practitioners to

CIA PROCESS



Source: Community Impact Assessment, A Quick Reference for Transportation. Pages 10-11.

OVERALL APPROACH FOR INCLUDING ECONOMIC VALUATION



PROCESS EXAMPLE: IMPACT ON SALES

- Existing Conditions ("No-Build")**

 Use surveys or available data to determine existing employment or sales conditions.
 Data Source: ESRI's Business Analyst Extension
- Proposed Conditions ("Build")**

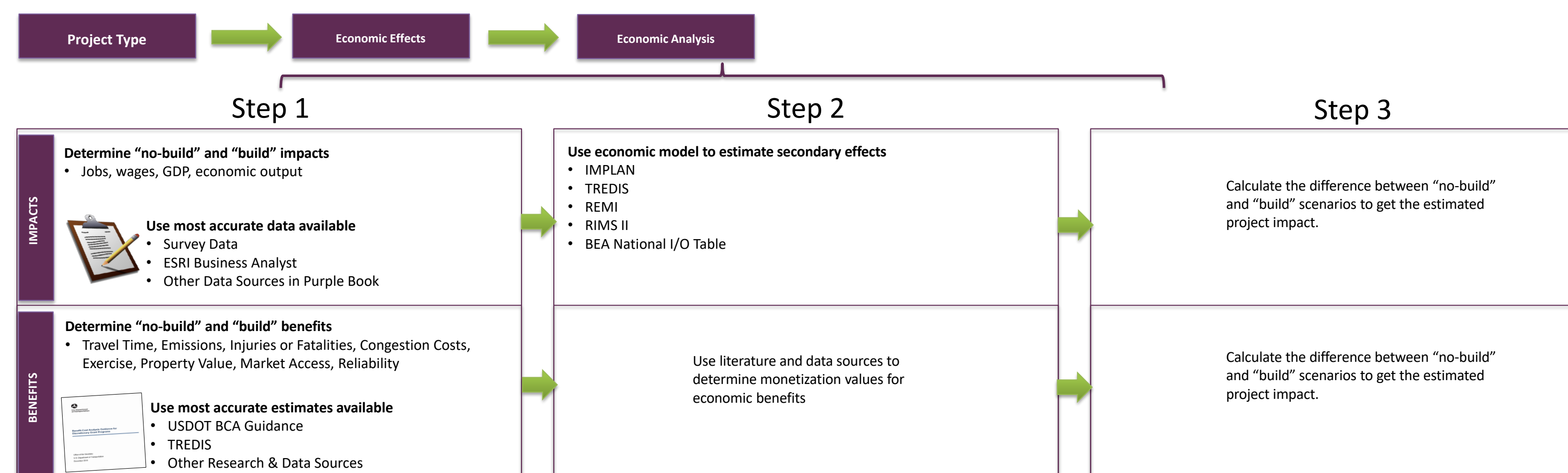
 Example: Roundabout install equates to 3.7 percent growth in annual sales for proximate businesses.
 Source: "A Study of the Impact of Roundabouts on Traffic Flows and Business." Kansas State University Transportation Center
 Use case studies, reports, surveys, or data to project economic growth.
- Model Economic Impacts**

 Derive direct and secondary impacts for no-build and build scenarios.
 Source: IMPLAN
- Determine Project Impact for CIA**

Scenario	Estimated Sales Impact [Output]			
	Direct	Indirect	Induced	Total
No-Build	\$988,000	\$472,000	\$437,000	\$1,897,000
Build	\$1,024,000	\$489,000	\$453,000	\$1,966,000
Estimated Impact	\$36,000	\$17,000	\$16,000	\$69,000

 Source: IMPLAN
 Evaluate change in economic effects between no-build and build scenarios.

APPROACH FOR CONDUCTING ECONOMIC ANALYSIS



ABOUT THE AUTHOR



Steve Bert is a Research Associate with ITRE's Economic Analysis and Policy Assessment Group. Mr. Bert has seven years of experience conducting research on topics related to transportation economics. He may be reached at stevebert@ncsu.edu.

ABOUT ITRE

The Institute for Transportation Research and Education (ITRE) is an institutional center located at North Carolina State University. ITRE conducts surface and air transportation research, training, and technical support activities for municipal, state, federal, and international clients in order to address critical transportation issues.