



# State-Wide Urban Transportation

## FY 2014 NCDOT Public Transportation Division

### Urban Transportation Operating and Financial Statistics Report

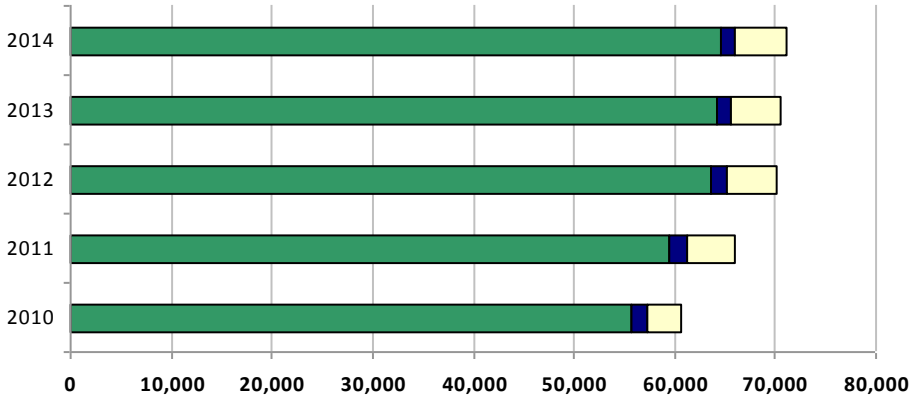
#### Systems By Type

Regional Urban	2
Fixed Route in Small Cities	2
Consolidated Urban-Community	5
Urban-Single City	15
<b>Total Urban Transportation System</b>	<b>24</b>

#### Highlights

<i>Total Passengers</i>	71,116,010	<i>Total Federal Assistance:</i>	\$48,214,818
<i>Total Hours:</i>	3,079,372	<i>Total State Assistance:</i>	\$31,029,605
<i>Total Miles:</i>	43,397,091	<i>Total Other Assistance:</i>	\$6,795,184
		<i>Total Local Assistance:</i>	\$164,655,199
		<i>Total Assistance:</i>	\$250,694,807

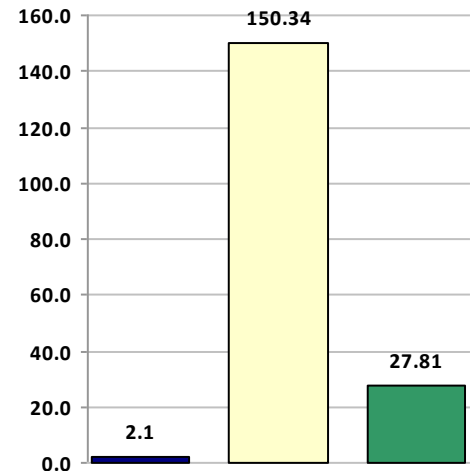
**Passengers By Year In Thousands**



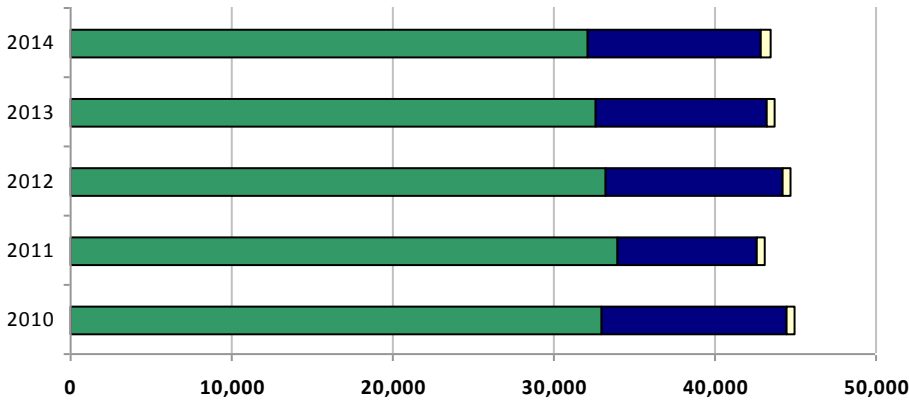
**Legend**

- Fixed Route
- Light Rail
- Demand Response

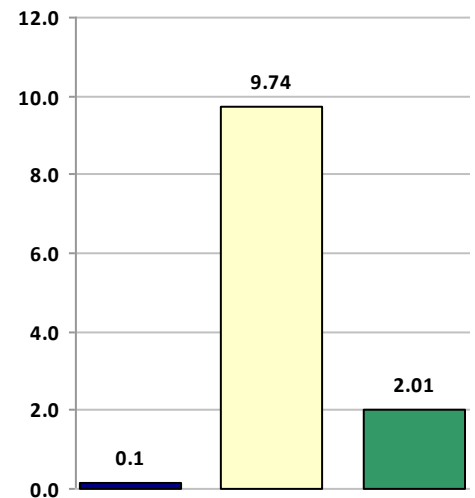
**Efficiency By Mode  
Passengers Per Hour**



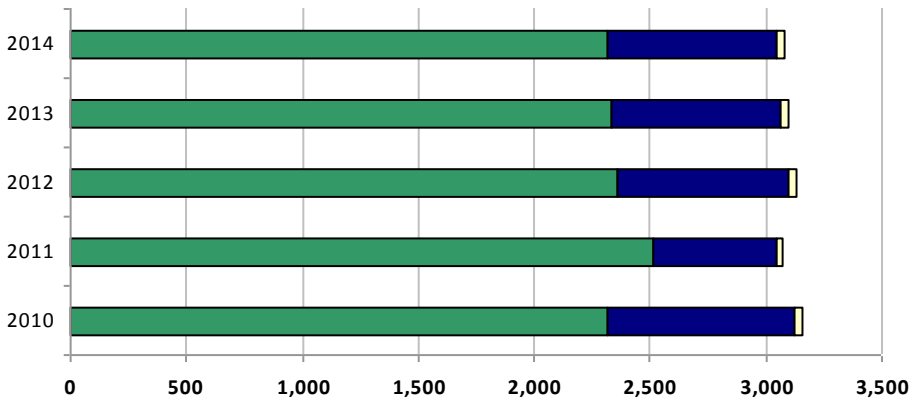
**Miles By Year In Thousands**



**Passengers Per Mile**



**Hours By Year in Thousands**



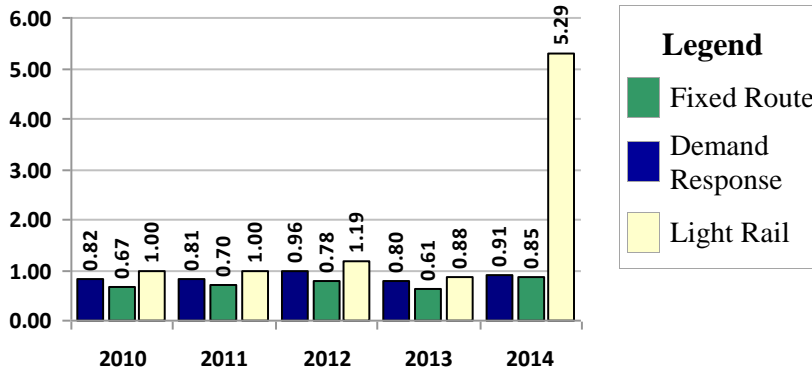


# State-Wide Urban Transportation

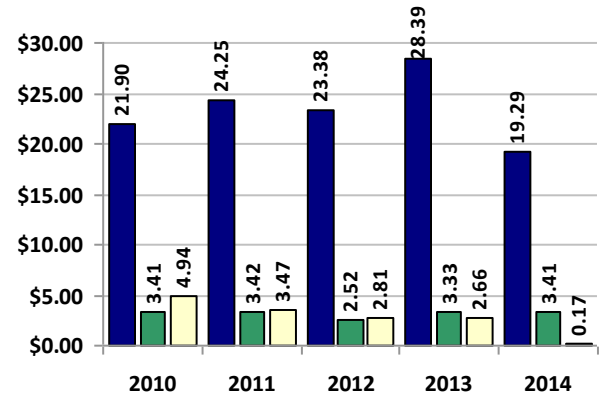
## FY 2014 NCDOT Public Transportation Division

### Urban Transportation Operating and Financial Statistics Report

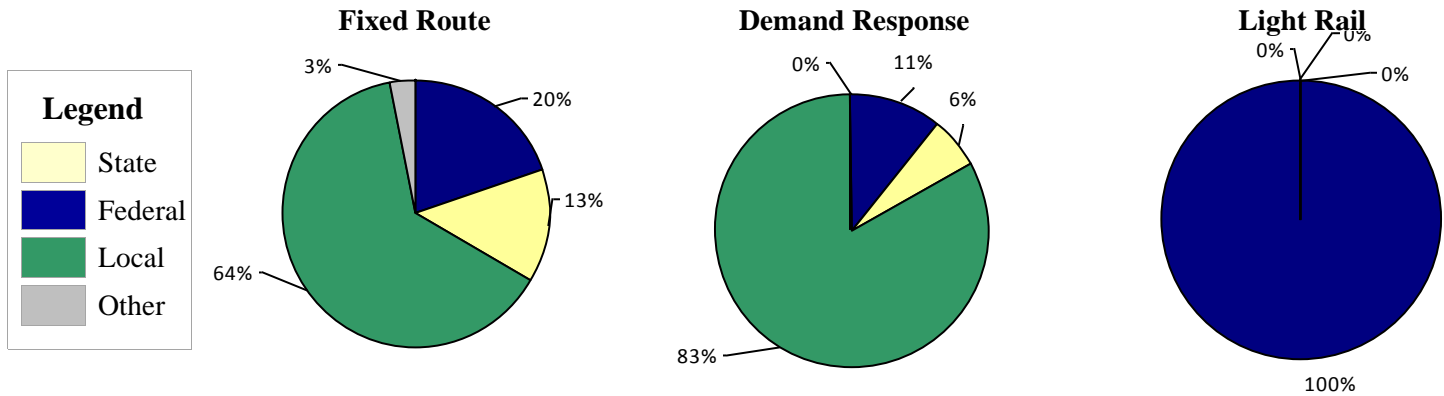
**Operating Ratio By Year and By Mode**



**Cost Per Trip By Year and By Mode**



### REVENUE DATA BY MODE



**DATA SUMMARY**

	Demand Response			Fixed Route			Light Rail		
	2013	2014	% Change	2013	2014	% Change	2013	2014	% Change
OP. EXPENSES:	\$43,539,530	\$43,472,541	0%	\$213,430,878	\$226,534,084	6%	\$13,084,582	\$13,755,228	5%
Federal Assistance:	\$4,398,541	\$3,321,522	-24%	\$39,146,060	\$44,033,296	12%	\$1,600,000	\$860,000	-46%
State Assistance:	\$1,709,224	\$1,780,571	4%	\$29,318,764	\$29,249,034	0%	\$0	\$0	0%
Local Assistance:	\$31,403,954	\$24,463,071	-22%	\$83,961,917	\$140,192,128	67%	\$7,125,686	\$0	-100%
Other Assistance:	\$0	\$0	0%	\$6,939,300	\$6,795,184	-2%	\$0	\$0	0%
Operating FUNDS:	\$4,210,640	\$3,928,527	-7%	\$53,136,172	\$54,824,017	3%	\$4,358,896	\$4,553,044	4%
OP. REVENUES:	\$41,722,359	\$33,493,690	-20%	\$212,502,213	\$275,093,661	29%	\$13,084,582	\$5,413,044	-59%
<b>Operating Ratio:</b>	<b>0.80</b>	<b>0.91</b>	14%	<b>0.61</b>	<b>0.85</b>	40%	<b>0.88</b>	<b>5.29</b>	503%
Subsidy Per Trip:	\$3.98	\$3.33	-16%	\$1.07	\$1.14	6%	\$0.33	\$0.17	-48%
<b>Cost Per Trip:</b>	<b>\$28.39</b>	<b>\$19.29</b>	-32%	<b>\$3.33</b>	<b>\$3.41</b>	3%	<b>\$2.66</b>	<b>\$0.17</b>	-94%
Miles:	10,614,301	10,782,807	2%	32,579,369	32,093,919	-1%	517,141	520,365	1%
Hours:	735,691	726,146	-1%	2,330,541	2,319,515	0%	33,536	33,711	1%
<b>Passengers Per Hour:</b>	<b>2.08</b>	<b>2.11</b>	1%	<b>27.52</b>	<b>27.81</b>	1%	<b>146.69</b>	<b>150.34</b>	2%
Passengers Per Mile:	0.144	0.142	-2%	1.968	2.010	2%	9.513	9.740	2%
Total Passengers:	1,533,575	1,532,367	0%	64,127,739	64,515,467	1%	4,919,307	5,068,176	3%

Statistics in blue and bold are used for benchmarking purposes

Operating Ratio is calculated by summing all local funds and dividing by expenses

Cost per trip is calculated using the total system expenses divided by the total number of trips.

Capital expenses and revenues are not included