



# State-Wide Community Transportation Summary

## FY 2014 NCDOT Public Transportation Division

### Community Transportation Operating and Financial Statistics Report

#### Systems By Type

Fixed Route in Small Cities	1
Consolidated Small City-Community	1
Human Service	2
Consolidated Urban-Community	5
Regional Community	6
Community	70
<b>Total Community Transportation Systems:</b>	<b>85</b>

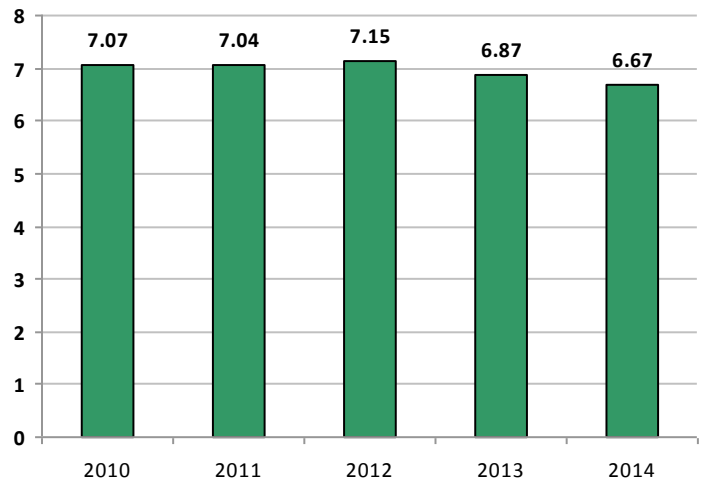
#### Highlights

	Operating	Capital	Total
<i>Total Local Funding:</i>	\$40,906,123	\$1,618,598	\$42,524,720
<i>Total State Funding:</i>	\$18,882,078	\$2,507,181	\$21,389,259
<i>Total Federal Funding:</i>	\$21,589,376	\$9,954,823	\$31,544,199
<b>Total Funding:</b>	<b>\$81,377,576</b>	<b>\$14,080,602</b>	<b>\$95,458,178</b>
<i>Total Passengers:</i>	6,669,213		
<i>Total Hours:</i>	2,480,918		
<i>Total Miles:</i>	47,207,727		

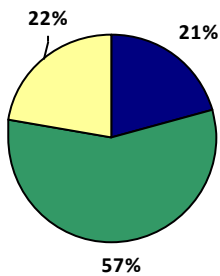
#### Passengers, Hours and Miles By Mode

Service Type	Passengers	Hours	Miles
Demand Response	4,087,802	2,114,188	39,436,391
Deviated Fixed	416,058	119,632	2,010,634
Fixed Route	1,897,249	85,396	1,166,263
Other	268,104	161,702	4,594,439

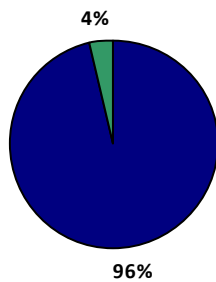
#### Passengers By Year in Millions



#### Trips By Funding Type



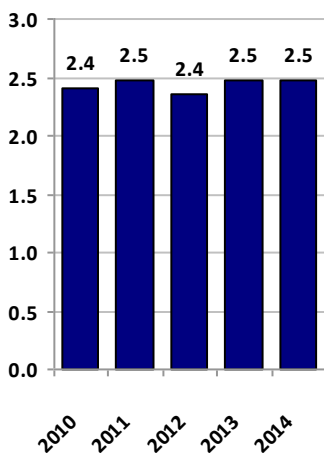
#### Passengers By Day Type



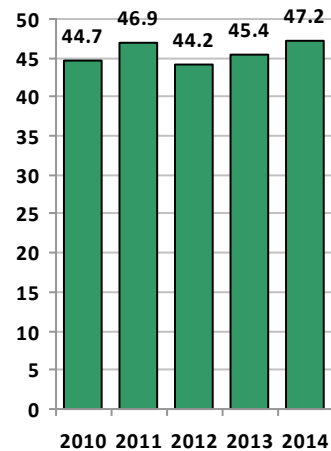
■ Medicaid  
■ NonContract  
■ Other Contract

■ Weekday  
■ Weekend

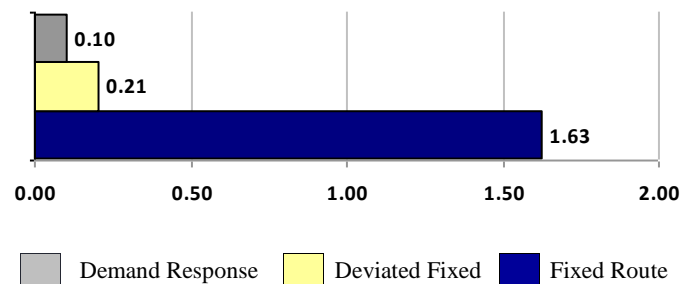
#### Hours Per Year in Millions



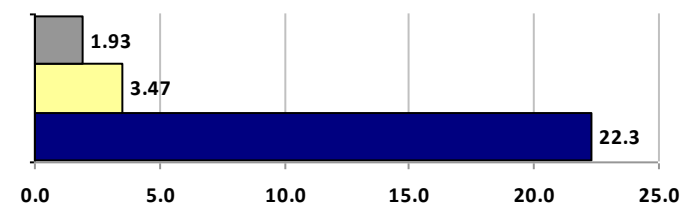
#### Miles Per Year in Millions



#### Efficiency By Mode Passengers Per Mile



#### Passengers Per Hour



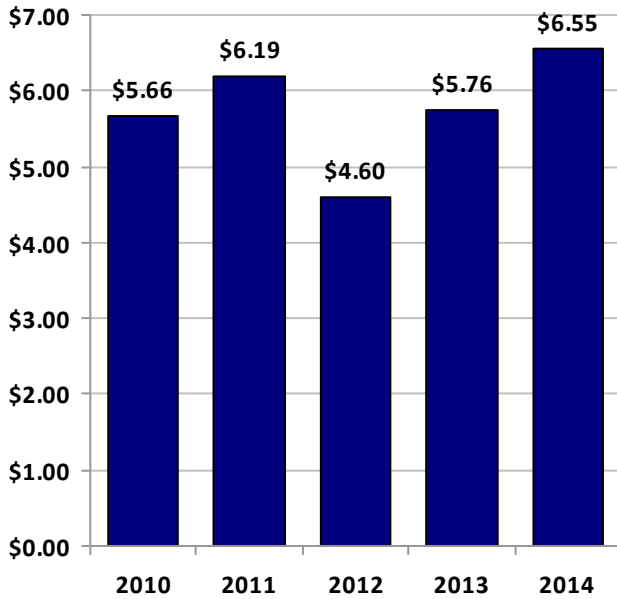


# State-Wide Community Transportation Summary

## FY 2014 NCDOT Public Transportation Division

### Community Transportation Operating and Financial Statistics Report

**Subsidy Per Trip By Year**



**Data Summary**

	2013	2014	% Change
<i>Subsidy Per Trip:</i>	\$5.76	\$6.55	14%
<i>Cost Per Trip:</i>	\$13.53	\$14.21	5%
Reportable Incidents:	49	38	-22%
Reportable Fatalities:	1	0	-100%
Reportable Injuries:	30	42	40%
Miles:	45,432,798	47,207,727	4%
Hours:	2,469,576	2,480,918	0%
<i>Passengers Per Hour:</i>	2.78	2.688	-3%
Passengers Per Mile:	0.151	0.141	-7%
Total Passengers:	6,869,338	6,669,213	-3%
<i>Non-Contract Trips Per Non-Urban Population:</i>	1.15	1.19	4%

Note: Statistics in bold italics are used for benchmarking purposes

Subsidy per trip is calculated using the total amount of Federal and State administrative and operating funds a transit system received divided by the total number of trips. Cost per trip is calculated using the total system expenses divided by the total number of trips.

**Administrative and Operating Funding Sources**

**Cost Per Trip By Year**

