

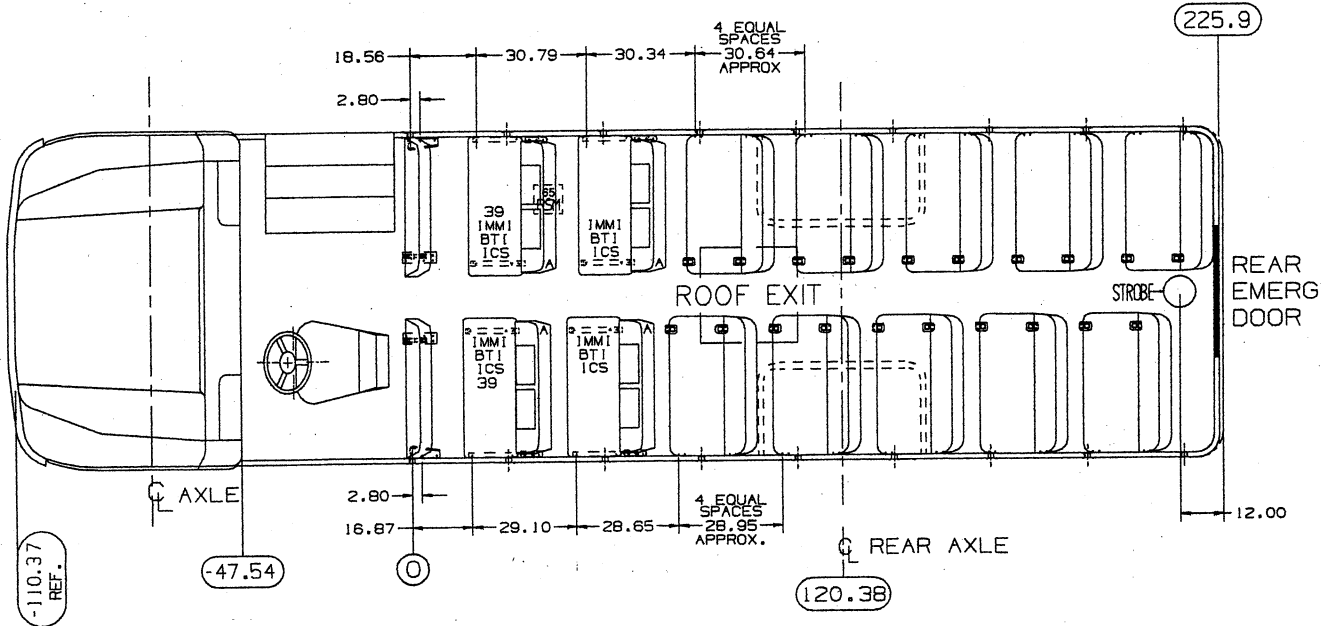
BODY PLAN

42 Passenger

WHEELBASE 193"

PB10500, 22 FT. 11 IN., CAP 42, SEAT SIZE 39/39, SEAT SPACING VARIES

Total Bus Length incl /Bumpers 28 FT. 2 IN.



PURCHASED SEATS IN THIS UNIT ARE:  
BTI CHILD RESTRAINT

50000/49000

REVISE ONLY ON *LEAFLET* SYSTEM

INTERNATIONAL TRUCK AND ENGINE CORPORATION		INTERNATIONAL CONFIDENTIAL PROPRIETARY	
REFERENCE	000	APPROX. MASS (WEIGHT)	
LINEAR MEASURE	<input type="checkbox"/> IN <input checked="" type="checkbox"/> MM	ROUGH PART	
UNLESS SPECIFIED BY TOLERANCES AND FINISH PART		FINISH PART	
ONE PLACE (.X)	±.05	TWO PLACE (.XX)	±.02
TWO PLACE (.XX)	±.02	THREE PLACE (.XXX)	±.010
THREE PLACE (.XXX)	±.010	ANGLES	±1°
NAME	BODY PLAN PB10500		CONTROL
NAME TRANSLATION			REVISION
DATE			APPROVED
DATE			DATE
DATE	FILE MARK CODE	PART TYPE CODE	SCALE
DATE			NONE
DATE	PART NO.		SIZE
DATE			OL
RELEASE NO.	WHITE-81		FORM

THIS UNIT CONFORMS TO APPLICABLE FMVSS THIS DOCUMENT IS IN ACCORDANCE WITH ASME Y14.5M-1994 AS AMENDED BY THE INTERNATIONAL TRUCK DIVISION DIMENSIONING AND TOLERANCING ADDENDUM 2000.







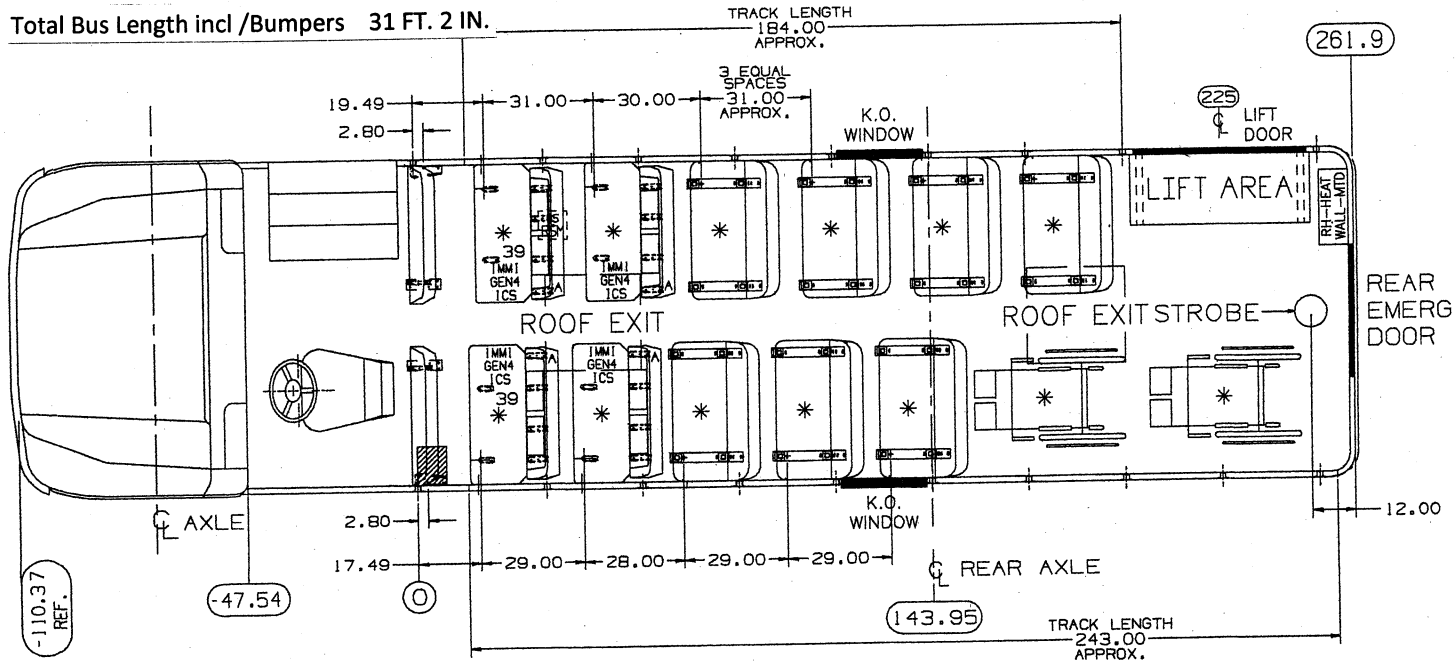
BODY PLAN

WHEELBASE 218"

### 54 Passenger With Lift & Flat Floor

PB10500, 25 FT. 11 IN., PLUS 9 FRT., CAP 35, SEAT SIZE 39/39, SEAT SPACING VARIES, LIFT-REAR, 2-WC

Total Bus Length incl /Bumpers 31 FT. 2 IN.



PURCHASED SEATS IN THIS UNIT ARE:  
GEN4 CHILD RESTRAINT

\* 427" : TOTAL TRACK LENGTH (APPROXIMATELY)

\* NOTE:  
IT IS THE SELLING DEALER'S RESPONSIBILITY TO ENSURE THAT ANY WHEELCHAIR TIE - DOWN SYSTEM SPECIFIED AND DEPICTED ON THIS DRAWING MEETS ALL DESTINATION STATE SPECIFICATIONS AND TO ALSO ENSURE THAT THE WHEELCHAIRS CAN BE PLACED AND REMOVED WITH RESPECT TO: SEATS, K/O'S, SIDE EMERG DOORS, HEATERS, LIFTS, WHEELHOUSES, ETC.  
POSSESSION OF THIS PRINT DOES NOT IN ANY WAY OBLIGATE IC CORP. TO BUILD THE UNIT SHOWN.  
WC TRACK SHOWN IS FOR REFERENCE ONLY.

THIS UNIT CONFORMS TO APPLICABLE FMVSS

THIS DOCUMENT IS IN ACCORDANCE WITH ASME Y14.5M-1994 AS AMENDED BY THE INTERNATIONAL TRUCK DIVISION DIMENSIONING AND TOLERANCING ADDENDUM-2000.

50000/49000

		INTERNATIONAL TRUCK AND ENGINE CORPORATION	
INTERNATIONAL CONFIDENTIAL PROPRIETARY			
REFERENCE	DOO		
L INEAR MEASURE: <input type="checkbox"/> mm <input checked="" type="checkbox"/> in	APPROX. MASS WEIGHT: ROUGH PART		
UNLESS SPECIFIED BY TOLERANCES USE	FINISH PART		
	mm	in	INTERNAL CONTROL
ONE PLACE (1.X1)	+1.5	+0.06	
TWO PLACE (1.XX1)	+0.25	+0.025	
THREE PLACE (1.XXX1)	+0.25	+0.010	
ANGLES	MM	MM	
NAME	BODY PLAN PB10500		CONTROL E 50
DATE	DATE		VERSION E
APPROVED	DATE	SCALE NONE	REVISION 4
DATE	PART NO.	SCALE NONE	SHEET 01
REVISION NO.	WHITE-87		FRAME

LEFT SIDE FUEL FILL  
OPTION CANNOT BE USED  
WITH THIS BODY PLAN.

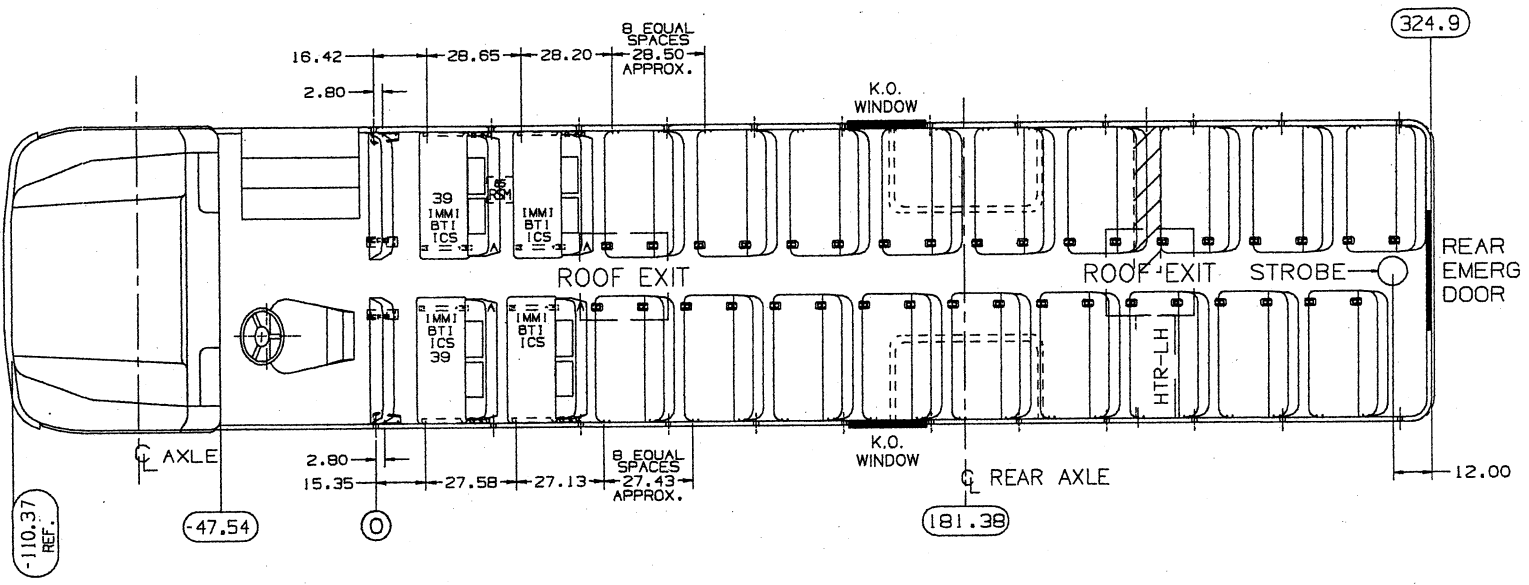
### 66 Passenger

BODY PLAN

WHEELBASE 254"

PB10500, 31 FT. 2 IN., CAP 66, SEAT SIZE 39/39, SEAT SPACING VARIES

Total Bus Length incl /Bumpers 36 FT 4 IN.



PURCHASED SEATS IN THIS UNIT ARE:  
BTI CHILD RESTRAINT

THIS UNIT CONFORMS TO APPLICABLE FMVSS THIS DOCUMENT IS IN ACCORDANCE WITH ASME Y14.5M-1994 AS AMENDED BY THE INTERNATIONAL TRUCK DIVISION DIMENSIONING AND TOLERANCING ADDENDUM-2000.

50000/49000

		INTERNATIONAL TRUCK AND ENGINE CORPORATION	
		INTERNATIONAL CONFIDENTIAL PROPRIETARY	
REFERENCE	000	APPROX. MASS (WEIGHT)	ROUGH PART
LINEAR MEASURE	<input type="checkbox"/> mm <input checked="" type="checkbox"/> in	FINISH PART	INTERNAL CONTR.
UNLESS SPECIFIED BY TOLERANCE AND UNLESS OTHERWISE SPECIFIED		FORM AND PROJECTION	
ONE PLACE 1.21	+1.5	+0.08	
TWO PLACE 1.22	+0.8	+0.05	
THREE PLACE 1.2001	+0.25	+0.010	
ANGLES	±1°		
NAME	BODY PLAN PB10500		CONTROL
DATE			REVISION
APPROVED	DATE	DATE	APPROVAL
DATE	PART NO.	SCALE	SIZE
		NONE	4
REG. NO.	WHITE-80	REV	01
		DATE	TIME







LEFT SIDE FUEL FILL  
OPTION CANNOT BE USED  
WITH THIS BODY PLAN.

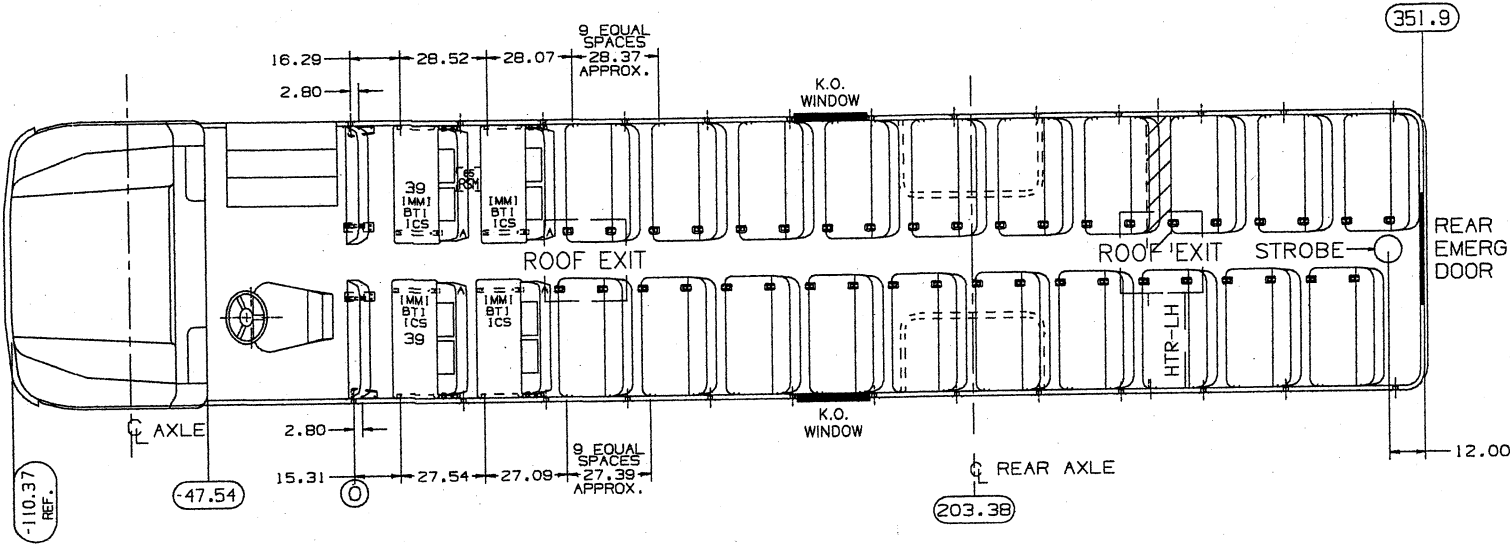
BODY PLAN

72 Passenger

WHEELBASE 276"

PB10500, 33 FT. 5 IN., CAP 72, SEAT SIZE 39/39, SEAT SPACING VARIES

Total Bus Length incl /Bumpers 38 FT. 7 IN.



PURCHASED SEATS IN THIS UNIT ARE:  
BTI CHILD RESTRAINT

50000/49000

		INTERNATIONAL TRUCK AND ENGINE CORPORATION	
		INTERNATIONAL CONFIDENTIAL PROPRIETARY	
REFERENCE	000	APPROX. MASS (WEIGHT)	
LINEAR MEASURE	MM <input type="checkbox"/> IN <input checked="" type="checkbox"/>	ROUGH PART	
UNLESS SPECIFIED BY TOLERANCES ARE		FINISH PART	
ONE PLACE (.XX)	+1.25 -0.08	STURD ANGLE PROJECTION	INTERNAL CONTROL
TWO PLACE (.XX1)	+0.18 -0.03		
THREE PLACE (.XXX1)	+0.25 -0.010		
ANGLES	±1°		
NAME	BODY PLAN PB10500	CONTROL	E 50
NAME FORMULATION		VERSION	E
DESIGN	LOUQUIES	APPROVED	
DATE	03/NOV/11	DATE	
APPROVED		PART NAME CODE	SCALE NONE
DATE		PART TYPE CODE	SHEET 4
DESIGNER		PART NO.	
DATE		FINISH NO.	WHITE-85

THIS UNIT CONFORMS TO APPLICABLE FMVSS THIS DOCUMENT IS IN ACCORDANCE WITH ASME Y14.5M-1994 AS AMENDED BY THE INTERNATIONAL TRUCK DIVISION DIMENSIONING AND TOLERANCING ADDENDUM-2000.



